

From-to Nejime Port One day bus excursion around Cape Sata and Ogawa Waterfall

Dep. 9:40



Cape Sata



Izashiki shopping district

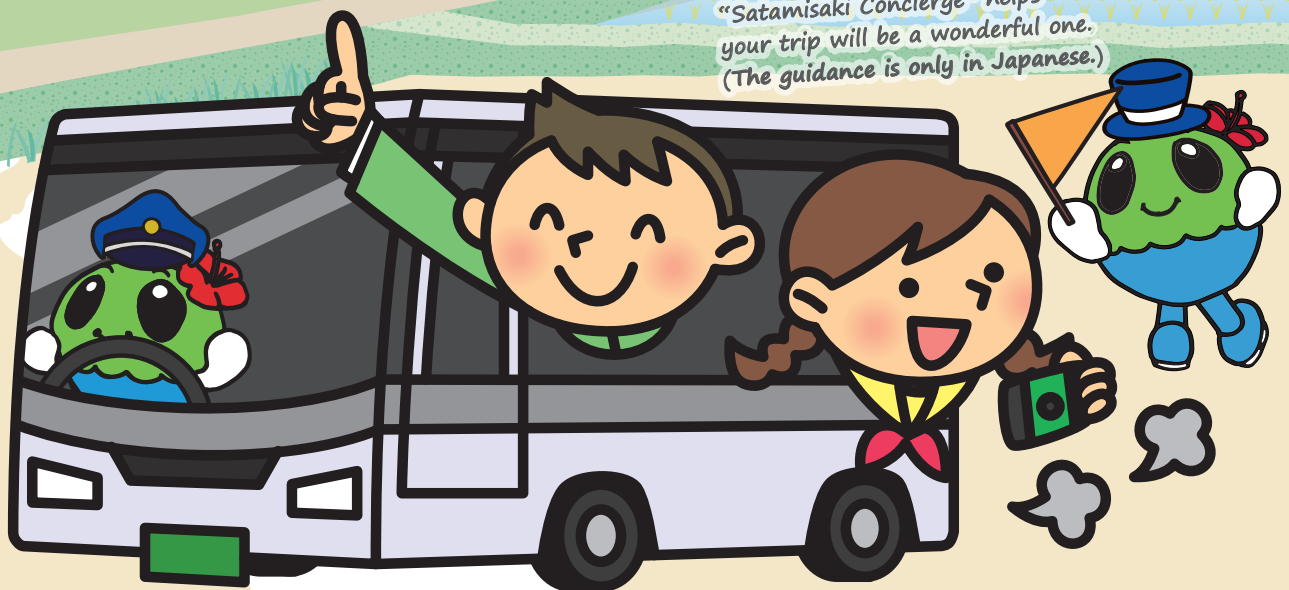


Ogawa Waterfall

Arr. 15:50



"Satamisaki Concierge" helps your trip will be a wonderful one.
(The guidance is only in Japanese.)



Cashless payment available.
Credit cards, Suica, QUICpay, etc...

2,500 JPY per person

*The above fare is adults' (12 and over). Children's (under 12) is half off.
Pre-school children are free.

Contact

Minamiosumi Town Office Tourism Section ☎ 0994-24-3115

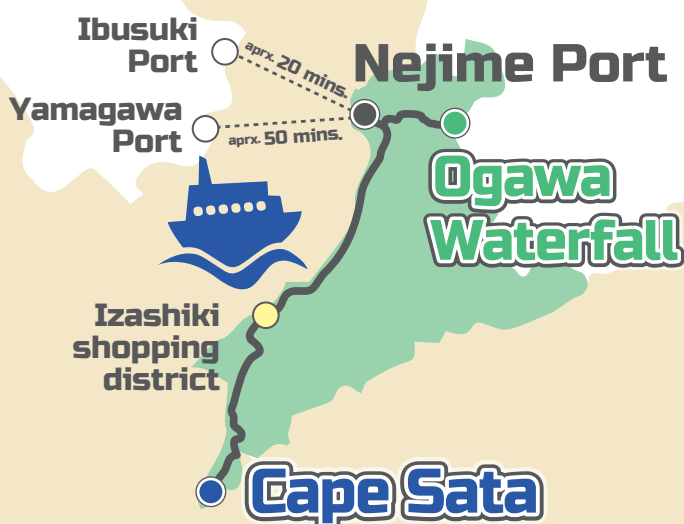
Minamiosumi Town Tourism Association ☎ 0994-24-3120

Operators

Sata Kotsu ☎ 0994-26-0128

Futagawa Kotsu ☎ 0994-24-2763

*Operators changes depending on the month. The details are provided on the back.



How can I enjoy
while a long journey?



Enjoy the scenery from the bus window

You can enjoy the beautiful scenery of the
each season. Mt.Kaimon you can see beyond
the Kinko Bay touches the heart of travelers.

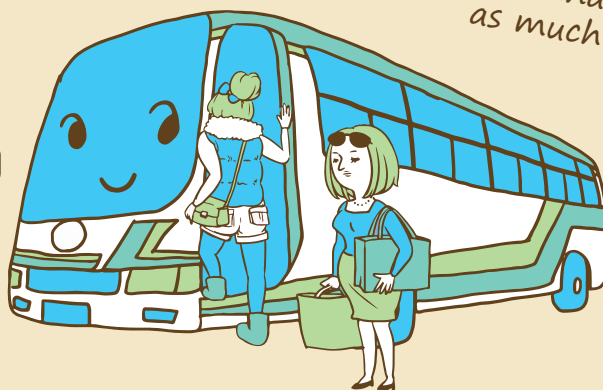


I wanna enjoy my first trip
as much as possible.

Wish you a wonderful trip

"Satamisaki Concierge" also takes the bus
and helps your trip will be a wonderful
experience for you.

***The guidance is only in Japanese.**



Notes

- You can get on and off this bus only **designated bus stops**.
- You can have a lunch freely at Izashiki shopping district.
- The operation may be cancelled or changed due to weather.
- If the minimum number of participants is not achieved, the operation may be cancelled. (minimum number : 1 / Capacity : 25)
- For service status, please consult the operators below.

Meeting time and point

9:30 Nejime Port

(721-20 Nejime-kawaminami, Minamiosumi-cho,
Kimotsuki-gun, Kagoshima Pref.)

45-minute drive from Kasanohara IC (Osumi Highway)
50-minute drive from Tatumizu Port (Tatumizu Ferry)

Monthly Operators

Apr.	Sata Kotsu	Oct.	Futagawa Kotsu
May.		Nov.	
Jun.	Futagawa Kotsu	Dec.	Sata Kotsu
Jul.		Jan.	
Aug.	Sata Kotsu	Feb.	Futagawa Kotsu
Sep.		Mar.	

Contact

Minamiosumi Town Office Tourism Section ☎ 0994-24-3115

Minamiosumi Town Tourism Association ☎ 0994-24-3120

Operators

Sata Kotsu ☎ 0994-26-0128

Futagawa Kotsu ☎ 0994-24-2763

*Operators changes depending on the month. The details are provided on the left.